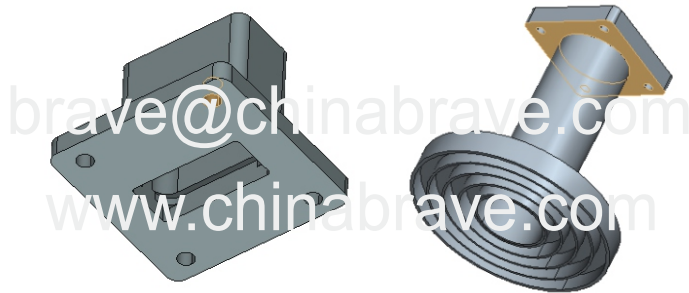


Coaxial Adapter



Electrical & Environmental

Frequency Range	2.17-3.3GHz	Impedance	50 ohm	VSWR	1.25 max
Input Avg Power	1000W @25°C	Peak Power	-	Insertion Loss	0.3 dB max

Mechanical & Product Information

Product Number	RWR340D, H-Grade	Body Geometry	Right Angle
Waveguide Body	Aluminum, grey painted	Waveguide	WR340, FDP26(UDR) Flange
Connector Body	Nickel plated brass	Coax Connector	L29(DIN 7/16) Female
Center Contact	Silver plated phospher bronze		
Operating Temp	-40°C to 70°C	Net Weight	About 855.5g

Typical Test Data

