



# MAX SX8

**DVB S2X**

## Description

The Digital Devices MAX SX8 is a tuner card with 8 HDTV tuners on a single card with PCIe connector. The high density of the design and the choice to select the operating mode as well as Unicable® and JESS® support and only 7 watts power consumption makes the card ideal and flexible for DVB-S/S2/S2X applications.

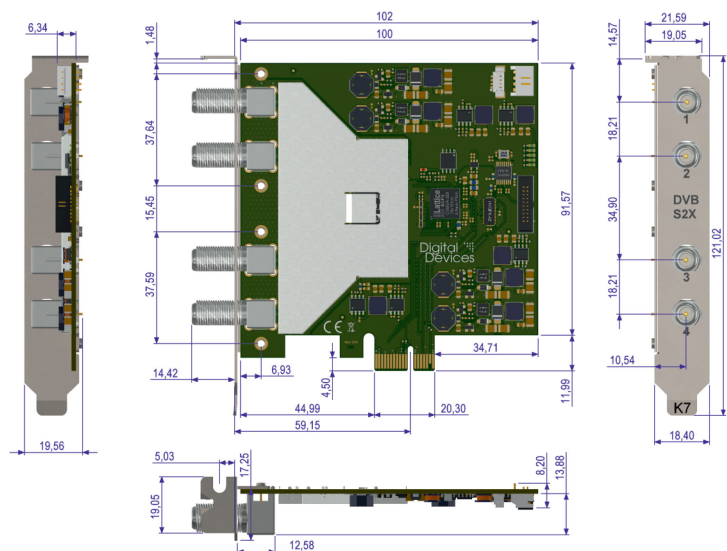
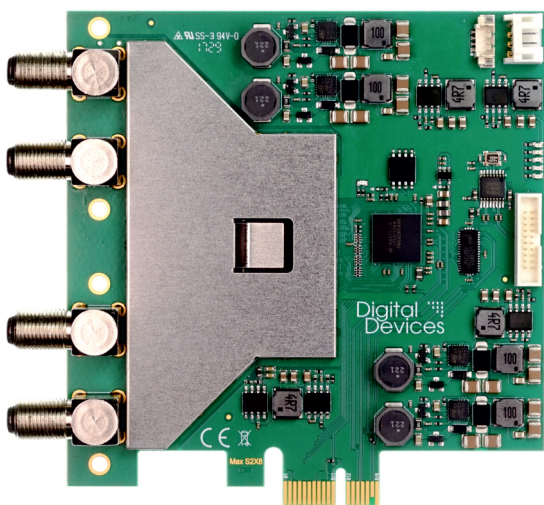
The card can be used with Windows XP, Windows Vista, Windows 7, 8, 10 and Linux operating systems.

The operating modes are „Quad“ or „Unicable / JESS“.

Using the “Quad” mode the card can either be connected to an LNB or a 4x multi switch. It supports one satellite.

In Unicable mode<sup>1</sup> it requires only one coax cable to support 8 tuners using Unicable®. Using JESS®<sup>2</sup> it can be connected to up to 32 tuners with just one coax cable.

- 1)  
requires Unicable®/ SCR / CENELEC En50494 compliant LNB or multi switch
- 2)  
requires Jess®/ CENELEC En50607 compliant LNB or multiswitch



# MAX SX8

## Technical Data

### Satellite characteristics

#### Modulation

QPSK  
8PSK/8APSK-L  
16APSK/16APSK-L  
32APSK/32APSK-L  
64APSK/64APSK-L  
128APSK  
256APSK/256APSK-L

#### LNB Power:

4 \* max. 19V, 1A pulse current,  
500mA continuous current  
overcurrent protection  
short-circuit protection  
L-Band: 950 Mhz to 2150 Mhz DVB  
FEC: (Auto Spectral Detection)  
DiSeqC support

### Standard connectors

PCIexpress  
L-Band input connector supports any needed  
power supply to the LNB  
20-pin socket for flat-ribbon cable to connect to  
Octopus NET

### Security

produced und developed according to European  
standards, DIN EN ISO 9001:2000

### Unicable compliant

SCR / Cenelec EN 50494 (Unicable®)

### Green IT

RoHS compliant  
WEEE DE 99353762

### Power consumption

PCIexpress compliant  
~ 7 watts without LNB current

### Supported operating systems

Linux (Kernel 2.6.34 and higher)  
Microsoft Windows® XP (Sp3)  
Microsoft Windows® Vista  
Microsoft Windows® 7 (32/64 Bit)  
(incl. Windows® Media Center)  
Microsoft Windows® 8 (32/64 Bit)  
(incl. Windows® Media Center)  
Microsoft Windows® 10 (32/64 Bit)

### System requirements

Dual Core Intel® or AMD® CPU  
512 MB RAM  
1x PCIe slot (x1 up to x16)

### Dimensions

H 104 mm, L 111 mm, D 15 mm

## Features

### DVB-S/S2/S2X tuner

4 satellite-inputs  
up to 8 multi-standard demodulators

### S2X Features

Short Frames  
Long Frames  
ACM (Adaptive Coding and Modulation)  
VCM (Variable Coding and Modulation)  
MIS (Multiple Input Streams)  
Annex M 2)  
Channel Bonding (S2X) 2)  
Maximum baudrate of 500 Mbit/s  
up to 2 slices  
Maximum DVB-S2/S2X LDPC-baudrate for all  
8 tuners: 720 Mbit/s.

### Symbolrates

QPSK:	~ 95* <sup>4)</sup>	Msym
8PSK/8APSK:	86* <sup>4)</sup>	Msym
16APSK:	64.5 <sup>4)</sup>	Msym
32APSK:	51.6 <sup>4)</sup>	Msym
64APSK:	43 <sup>4)</sup>	Msym
128APSK:	36.85 <sup>4)</sup>	Msym
256APSK:	32.25 <sup>4)</sup>	Msym
Annex M:	500 <sup>2)</sup>	Msym

### Sensitivity

@25Msym:		
QPSK 11/45:	-89 dBm	20 dBµV
QPSK 1/2:	-86 dBm	23 dBµV
8PSK 9/10:	-77 dBm	32 dBµV
256APSK 3/4:	-69 dBm	40 dBµV

### Additional features

Strong signal immunity: > 106dBµV (-6dBm)  
Isolation: 65dB – 80dB depending on signal strength

### DiSEeqC 2.0 Support

### Unicable® SCR / Cenelec En50494

Supports up to 8 tuners with just one antenna cable  
using Unicable®/ SCR / CENELEC En50494  
compliant LNB or multi switch

### JESS® / Cenelec En50607

Supports up to 32 tuners with just one antenna  
cable using CENELEC En50607 compliant LNB  
or multi switch

### PCIexpress

Connection via PCIe x1 up to x16 slot

### GT-Link Port

To connect to Octopus NET (Data rate > 1Gbit)  
Make use of PCIexpress or GT-Link Port

### Support of many TV applications

Microsoft Windows® Media Center 7/8, DVBCViewer,  
Media Portal, Gen2VDR, MythTV

### Green IT

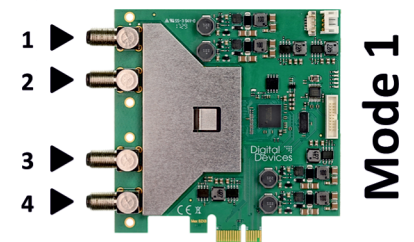
Power consumption of ~ 7 Watts  
No tantal capacitors  
No electrolyte capacitors

### Supported operating systems

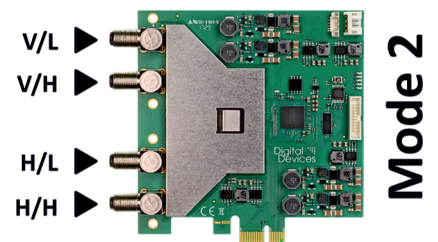
Microsoft Windows® XP/7/8(.1)/10  
Linux (Kernel 2.6.34 and higher)

## Modes

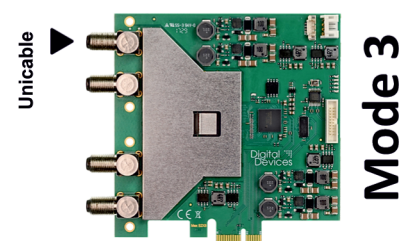
### Quad-LNB



### Quattro-LNB / Multiswitch



### Unicable LNB / Multiswitch



### Manual „Max SX8“

vers. V1-2021-03



ArtNr.: 820148  
EAN: 4260217681560